

2017 CATALOG



WWW.FRIGHTIDEAS.COM



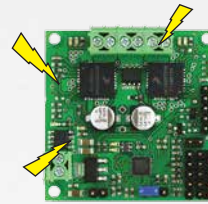
ABOUT FRIGHT IDEAS

The engineers at Fright Ideas have been working in the haunt industry since 1992. After years of frustration trying to marry PLCs, sound boards, and controllers from vendors that didn't understand Halloween, we began to design our own controllers. In 2004 we brought our BooBox to market and never looked back. Our reliability, ease of use, and great customer support have built a reputation that's trusted by the industry's leading manufacturers and haunted houses.

We know from experience what works and what doesn't. For example ...

- Many of our controllers have audio integrated on-board rather than as a separate add-on. This makes programming easier and doesn't waste outputs.
- All of our products are designed to be user-friendly. Need to make a quick change in the middle of a busy night? It's so easy to do with our gear!
- All our products are designed to fit neatly in compact enclosures that protect both the sensitive electronics, and our customers from any hazardous high-voltages.

Some other manufacturers cut corners and sell you a bare circuit board... but have you ever bought a DVD player or stereo that looked like that? There's a reason. If you want your investment to last, and your customers and employees to be safe, make sure your next controller comes in a box!



**Enclosed
Circuit Board**

NEW ESCAPE ROOM CONTROLLER!

Meet EscapeKeeper

The EscapeKeeper is the first controller we've designed specifically for the Escape Room industry. Our Flex and FlexMax products have been used to control Escape Game puzzles for years. In creating the EscapeKeeper we used a combination of that experience, advice from industry experts, and our own expertise in designing industry-leading controllers.

The EscapeKeeper is available in two models, one with sound and one without. Each model has multiple puzzle modes you can choose from. Simply choose your puzzle mode, connect up to eight inputs, tap record, then act out your puzzle's solution. That's it! When the players figure out how to repeat those same actions the EscapeKeeper will unlock the door or activate a device of your choosing.

There are also two programmable outputs and an optional internal MP3 player and amplifier you can leverage to further customize the EscapeKeeper to your application. No special software or programming skills are required.

In our 20 years of designing electronics, we've never packed this many features into such a compact and easy to use product. We're very excited to introduce the EscapeKeeper and can't wait for you to learn more about it. See our website or dedicated brochure for more information.

NEW!



Features:

- Eight puzzle sensor inputs
- Three solid-state outputs
- Built in Game and Reset Timer
- Optional MP3 Audio with 35 watt Amp
- E-Stop detection
- Pre-game check ensures any game pieces have been returned to the game start position.

\$149⁹⁹

EscapeKeeper JR
No Audio
PN: 503

\$249⁹⁹

EscapeKeeper
With Audio
PN: 504

**SEE OUR DEDICATED BROCHURE
FOR MORE INFORMATION**

THE PICOBOOS



PicoBoo ONE

PROP CONTROLLER **FI-102**

- Simple, compact unit
- One solid-state output
- Triggerable

(12V 1A power supply included)

PicoBoo JR

PROP CONTROLLER **FI-103**

- Simple, audio-free unit
- Two 10 amp relay outputs
- Triggerable

(12V 1A power supply included)

PicoBoo

PROP CONTROLLER **FI-104**

- Up to 2 minutes of sound
- Two 10 amp relay outputs
- 30 watt Class D amplifier
- Triggerable

(12V 1A power supply included)

PicoBoo AC

PROP CONTROLLER **FI-105**

- Up to 2 minutes of sound
- Two AC socket outputs
- 10 watt Class D amplifier
- Triggerable

(power cable included)

The PicoBoos have been the controllers to beat since they were introduced. You won't find other controllers at these prices, with these features, that are this easy to use. So for simple, two output props or scenes, the PicoBoos are the only sensible choice.

Audio

The PicoBoo and PicoBoo AC use a built-in flash memory sound chip that makes it easy to playback and record up to 2 minutes of sound. Hook up any audio device to the PicoBoo's audio-in and record the desired sound straight into the chip. No computers, no drivers, no converting sound formats. Up to 8 scare sounds can be recorded. The PicoBoos will automatically increment through them with each scare.

Amplifier

The PicoBoo and PicoBoo AC include internal Class D amplifiers. This allows the use of standard speakers which are smaller and easier to conceal than powered speakers - a big advantage when you need to hide the speaker in a prop.

The amplifier's full output power can only be realized with a 4 ohm speaker and a power supply of at least 3 amps. The included 1 Amp power supply is surprisingly loud, but you may notice distortion at higher volumes.

Real-Time Programming

All programming of outputs and sounds are done in real-time using the programming buttons on the PicoBoo. Like all other Fright Ideas controllers, you can create an elaborate scene synchronized with sound by simply pushing some buttons.

Trigger Input

The PicoBoos have a trigger input that can be used to trigger the scare automatically with a sensor or pushbutton. The input will now automatically detect if a motion sensor is connected, preventing the prop from looping while it warms up. If you want the PicoBoo to loop your scare indefinitely, connect the "-" and "IN" trigger pins with a small wire jumper.

Outputs

The PicoBoo and PicoBoo JR have two 10 amp relay outputs. Relays give the flexibility to control different voltages; maybe one for a light, and one for a 12 volt solenoid. Each relay also has both a normally-open and normally-closed contact.

The PicoBoo AC has AC outputs, making it possible to plug lights, strobes, motors and most props right in. This is the best model to choose if you will only be controlling 120 volt devices.

The PicoBoo ONE has a single 2 amp solid-state output and can run at 12 or 24VDC.

Ambient and Scare Modes

When the PicoBoos are not scaring, they are by default in ambient mode. Program the PicoBoo's sound chip with what you want the patrons to hear as they approach the scare, perhaps a little foreshadowing of the terror to come. Only audio can be programmed in ambient mode.

Write-Protection

Just like their BooBox cousins, the PicoBoos have a write protection mechanism that helps prevent accidental or unwanted program changes.

**SEE OUR STARTER
KITS ON PAGE 10**

OR CALL 1-877-815-5744

FOUR OUTPUT PICOBOOS



PicoBoo PLUS

PROP CONTROLLER **FI-124**

- Up to 2 minutes of sound
- Four 10 amp relay outputs
- 30 watt Class D amplifier
- Ambient animation

(12V 1A power supply included)

PicoBoo MAX

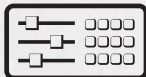
PROP CONTROLLER **FI-134**

- MP3 Audio from SD Card
- Four 10 amp relay outputs
- 30 watt Class D amplifier
- Compatible with Director software

(12V 1A power supply included)

If you've ever wanted the simplicity of a PicoBoo but needed just one or two more outputs, then look no further than the PicoBoo PLUS. This unit works exactly like the original PicoBoo but includes four 10 amp relays. And we've used the latest chip and assembly technology to fit it all in the same size box!

Real-Time Programming



Just like its PicoBoo brothers, the PicoBoo PLUS can be easily programmed using the on-board buttons. Program all the outputs at once, or layer them one at a time for more complicated scenes. There's no confusing button sequences to memorize or manuals to study. One button for each output keeps things straight forward. Simply press record and start animating.

Relay Outputs

Four 10 amp relay outputs make it possible to control just about anything. The relays can control up to 120 volts. Normally-open and normally-closed contacts are available for each relay. Each set of outputs is connected through a large, easy to wire, pluggable terminal block.



Ambient Animation

The PicoBoo PLUS doesn't just play sounds during ambient mode, it can also animate the outputs while the prop is waiting to be triggered. This is great for giving props a little life as patrons are approaching the scare.



Trigger Input

The PicoBoo PLUS's trigger input automatically detects if a motion sensor is connected, preventing looping at startup.

If you want the simplicity of a PicoBoo as well as great MP3 quality audio then the PicoBoo MAX is the controller for you.

MP3 Audio



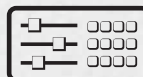
The PicoBoo MAX uses the same MP3 decoder as our BooBoxes. No need to play sounds into these PicoBoos, just copy the files to an SD card. Up to 8 scare sounds can be used to mix things up. Ambient audio tracks can be synced with ambient animation, or just fill the SD card with scary audio and it'll play that while it sits waiting to be triggered.

Amplifier

The MAX includes the same Class D amplifier as its PicoBoo brothers except it's in stereo. That's two channels of audio at 15 watts each. It gets loud!

Real-Time Programming

The PicoBoo MAX can be easily programmed using the on-board buttons. Program all the outputs at once, or layer them one at a time for more complicated scenes.



Relay Outputs

Just like the PicoBoo PLUS, four 10 amp relay outputs make it possible to control just about anything. The relays can control up to 120 volts and are connected to large pluggable terminal blocks.

Director Compatible

If you prefer software, the MAX can also be programmed with our free Director software. Director will also allow you to program up to eight ambient and input scenes.

**SEE OUR STARTER
KITS ON PAGE 10**

INTUITIVE PROGRAMMING



Director

ANIMATION SOFTWARE

- Free software for our controllers
 - Very simple, intuitive interface
 - Includes an audio editor
 - Animate in real-time using Director Connect
- (requires Windows XP or later)

Director is an innovative application developed specifically for Fright Ideas controllers. Whether you're programming a small show with a few outputs, or a complex show with lots of DMX devices, Director's clean and intuitive interface will make the job a breeze.

Simple Import and Export

If you want to edit an existing show on one of your controllers or ScareMaster, simply insert the SD card and Director will take care of the rest. When you're ready to export a show to a controller, Director will do all the dirty work. It couldn't be easier.

Easily Adjust Scene and Show Settings

Get the most out of your controller by tweaking and tuning the scene and show settings. Tweak and tune delays, timers, volumes, and more. Harnessing the hidden power of your controller has never been easier.



Built-in Audio Editor

Director includes a built-in audio editor that allows you to trim, fade, copy, paste, and apply loads of sound effects - all without having to leave the program. And there's no need to convert your audio files to MP3, Director does that for you too.

NEW!

Director Connect PC TO BOOBOX CONNECTION KIT

FI-201

Director Connect will allow you to connect a BooBox directly to your PC so Director can animate your show in "real-time". Without Director Connect, shows must be saved to an SD card and inserted into the BooBox when you want to see how the changes you've made look in the real world.

The Director Connect is especially useful for complex scenes with lots of outputs, long durations, or DMX devices. DMX devices connected to the BooBox are also animated in real-time so any changes to lighting colors and levels can be seen immediately.

Requires a USB port. Includes all cables.



Director Composer CONTROL SURFACE

FI-202

Use the Director Composer with the Director software to easily manipulate up to 64 digital and 8 analog outputs at a time. This control surface also allows you to enable and disable outputs for recording, as well as start and stop recording and playback.

Requires a USB port. Includes cable.

OR CALL 1-877-815-5744

PROFESSIONAL CONTROLLERS

ScareMaster ANIMATION PROGRAMMER

FI-200

- Easily program complicated scenes
- Quickly adjust your BooBox's settings
- Program from a comfortable location

(includes SD card and FrightLink cable)

Powerful Programming

The ScareMaster uses buttons to program the relay outputs and sliders to program any lighting and servo outputs. You can program as many or as few outputs at a time as you want. Keep programming over an output until it's just right, all while listening to your sound track play along in perfect sync.

Cloning

The ScareMaster can be used to make perfect clones of any of our controller products - great for prop manufacturers! Once a prop's sound and animation have been finalized, use the ScareMaster to make exact clones for each controller. Both the sound and animation are copied perfectly every time. Any number of programs can be permanently stored on the SD card.

\$199⁹⁹



The ScareMaster programmer makes advanced scene programming easy. There's no need to drag a laptop around or learn confusing button sequences. Just plug it into your BooBox and start animating. The ScareMaster's FrightLink cable allows you to program from a comfortable location, rather than having to work from where the controller is mounted.

LCD Interface

The ScareMaster's LCD menu prompts you through each step of programming. The intuitive interface makes changing even the most obscure setting clear and simple.

BooBox Flex

PROP CONTROLLER

FI-206-X

- High current solid-state outputs
- 2 outputs can dim LEDs or small bulbs
- Pluggable terminal blocks
- 4MB internal show memory
- 2 trigger inputs

(power supply optional)

The BooBox Flex is the most popular controller for props that need more than 4 outputs, great audio quality, or solid-state outputs. Programming is made easy using our ScareMaster or free Director software. No other controller packs in this many features at this price. It's no wonder that it's the controller of choice for the leading prop manufacturers in the industry.

Flexible Storage

The Flex can use either its internal memory or an SD card for animation and MP3 storage. The internal 4MB flash chip has enough memory for most props. For more demanding props, pop in an SD card and it'll use that instead.

Audio



The Flex's built-in MP3 player takes the audio of your prop to a whole new level. Set the Flex to play the same sound every time, or increment through different ones to mix things up. For smoother scene transitions, audio can now be set to fade from the ambient sound to the trigger sound.

DMX Output

The Flex can be upgraded to output DMX. This makes it easy to incorporate DMX lighting, strobes, and foggers into your scene or prop. It also allows it to control our new DMX servo board.



\$159⁹⁹

2 Outputs
FI-206-T-2

\$179⁹⁹

4 Outputs
FI-206-T-4

\$199⁹⁹

8 Outputs
FI-206-T-8

\$224⁹⁹

8 Outputs/DMX
FI-206-T-D



Solid-State Outputs

Up to 8 solid-state outputs will power 12 or 24VDC devices. Each output is protected from shorts and overloads and capable of handling 1.5 amps of current. On the eight output model, two of the outputs can be used to dim LEDs. Additional output options are available using our BooBox output accessories.



Triggers Inputs



The Flex has 2 optically-isolated inputs that can each be set to index through up to 8 scenes. Pre and post-delays are also available for each trigger, as well as a timer mode to set the prop off on a recurring schedule. New firmware prevents motion sensors from triggering the Flex at startup.

Programming

Prop controllers are often mounted in hard to reach locations that make programming directly on the controller difficult. The BooBoxes are designed to be programmed in real-time using our ScareMaster programmer or free Director software. Whether you like programming with a computer or without, in real-time or offline, we have a solution for you.

SOUND AND ACCESSORIES

BooBox FlexMax PROP CONTROLLER FI-216-X

- High current solid-state outputs
- 50 Watt Class D stereo amplifier
- 3 outputs can dim LEDs or small bulbs
- 16MB internal show memory
- 8 trigger inputs, 2 RC servo outputs
- DMX lighting output
- **New AutoTalk Feature** (extra \$50)
(power supply optional)

The BooBox FlexMax is a great option if you need a feature-packed controller. Since last year we've added an optional AutoTalk feature that will enable you to control a pneumatically-driven mouth in real-time using a microphone. You can use this to control a large character using a combination of pre-programmed movements and live speech. We've also added more firmware features for Escape Room applications.

Flexible Outputs

The FlexMax can be purchased in 4, 8, or 16 output models. All outputs are solid-state so they can control 12 or 24VDC loads with no wear and tear. Each output is protected from shorts and overloads and capable of handling 1.5 amps of current. On the 16 output model, three of the outputs are capable of dimming LEDs and small bulbs. If you need to control high voltage loads, just add one of our output accessories at the bottom of the page.

DMX Output

Take your high-end props and scenes to the next level by adding the ability to control popular stage lighting, strobes, and foggers. The FlexMax makes it easy to control all of them together while keeping them in sync with your prop's animation.

MP3 Player

The FlexMax has a built in MP3 player that can play hours of CD quality sound. Play ambient music while the BooBox is idle, then when it's time to scare, use the adjustable delays to play the scare sound at just the right moment. New firmware allows unlimited ambient audio files, resuming the ambient audio where it left off, and fading between scenes. The upgraded CPU means it can play even higher bitrate audio than it could before.

BooBox Accessories



\$9.99
12v: FI-321-12
24v: FI-321-24

Single Relay Board
Add a single 10 Amp relay to a BooBox's solid-state output so it can control a fog machine or other high power device.



Relay Board
Adds four 10 Amp relays to a BooBox Flex or FlexMax. Link two together to get 8 outputs. Relays work in tandem with existing outputs.

\$24.99
12v: FI-324-12
24v: FI-324-24



\$64.99
12 Volt FI-308B-12
\$69.99
24 Volt FI-308B-24

AC Relay Pack 8
Adds 8 on/off AC outlets to a BooBox Flex, or FlexMax. Cable Included.



DMX Dimmer Pack
Adds 4 dimmable AC outlets to a BooBox FlexMax. Chain multiple units together to add more channels.

SnapTrack
12 Inch FI-325-12 \$9.99
24 Inch FI-325-24 \$17.99
DIN Clip FI-325DC \$2.99 (need 2)

DMX Adapter Cable
FI-310 \$12.99



Amplifier & Mixer Input

The FlexMax harnesses the power of a 50 watt Class D stereo amplifier for maximum sound quality. The mixer input allows you to take advantage of the internal amplifier for other line-level audio you may need amplified as well.

Trigger Inputs

The FlexMax has 8 optically-isolated inputs for scene flexibility. Inputs can be used to trigger scenes, different length shows for busy nights, or even as emergency stops. Adjustable pre and post-delays can be set for each input. Triggers can also be set to stop a scene, loop on a schedule, or increment through different scenes. A motion sensor startup delay can be enabled to prevent the BooBox from triggering while the sensor warms up.

ESCAPE ROOM FEATURES

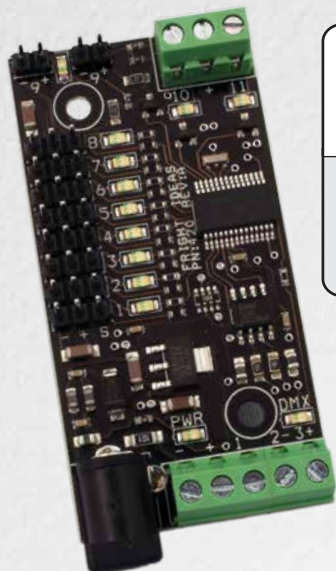
BooBoxes have been used to run Escape Rooms for over three years. We are continuously adding new firmware features to support new puzzles. Did you know the BooBox could...

- Trigger a scene only when multiple inputs are triggered at the same time, trigger a different scene if the wrong inputs are pressed.
- Trigger a scene when inputs are activated in a certain sequence, trigger a different scene when the sequence is wrong.
- Choose which scene a particular input will jump to on a per-scene basis, rather than it always jumping to the default input scene.
- Enable and Disable inputs based on the state of a puzzle.

WE NOW HAVE DOWNLOADABLE EXAMPLES FOR MANY POPULAR ESCAPE ROOM PUZZLES. SEE OUR WEBSITE FOR DETAILS.

OR CALL 1-877-815-5744

SERVO CONTROLLERS AND SKULLS



ServoDMX

DMX SERVO BOARD FI-420

- 8 servo outputs with optional limits
- LED outputs
- 2 solid-state outputs

(includes 5 volt power supply)

\$99⁹⁹

The ServoDMX allows you to control RC servos, LEDs, and two accessories from a FlexMax or any standard DMX console.

Flexible

Pair the ServoDMX with a BooBox Flex or FlexMax to add its servo, LED, and digital outputs to your show. The outputs can then be programmed using the sliders on the ScareMaster, or the virtual controls in our Director software. The ServoDMX is also compatible with any standard DMX controller.

Intelligent Motion Control

The ServoDMX includes intelligent motion algorithms which allow you to set maximum travel, speed, and acceleration limits for each servo. This makes it very easy to create smooth life-like movement while also protecting your servos and mechanics.

Easy Setup

The DMX starting address, servo limits, and output options are all easily set using our software tool or ScareMaster.



\$19⁹⁹
EYES/MOUTH

\$99⁹⁹
EYES/MOUTH
HEAD TURN

PicoTalk

SERVO CONTROLLER FI-402

- Real-time mouth control to audio
- Programmable LED Eye Outputs
- 2 or 3 servo outputs
- Intelligent random eye/head movement

(includes 5 volt power supply)

The PicoTalk is an auto-talk, random-movement, LED dimmer, and servo-centering device all in one. Connect an audio source and up to three servos and the PicoTalk will bring them to life.

Real-Time Mouth and Eye Control

The PicoTalk listens carefully to the audio and moves the mouth servo in sync to make the character look like it's doing the talking. LED Eyes can be set to throb as the character talks, stay at a constant brightness only while it talks, or remain on all the time. No programming or specially encoded audio track is required.

Intelligent Random Movement

The second and third servo outputs can also be used to control other movements, such as the eyes, neck, or hand of the character. The PicoTalk will occasionally move these servos when the character isn't talking to give it some life. When the character starts talking, it will increase the activity. The amount of movement is completely adjustable.



Talking Skulls

ANIMATRONICS

All Talking Skulls ship ready to run. Just connect them to an audio source and they'll come to life.

Talking Skull

Complete skull with moving mouth and LED eyes. Just needs an audio source.

\$349⁹⁹
FI-405

Talking Skull with Head Turn

Complete skull with moving mouth, LED eyes, and head turn option. Includes a PicoTalk or ServoDMX controller.

\$499⁹⁹
FI-406

Talking Skull Kit

Complete skull with LED eyes, BooTunes MP3 player, and all necessary accessories.

\$459⁹⁹
FI-405K

Dual Talking Skull Kit

Two complete skulls with BooTunes MP3 player and all cables to allow them to have a conversation.

\$799⁹⁹
FI-405DK



Standard



Pumpkin



Franken



SteamPunk +\$99



Demon +\$99

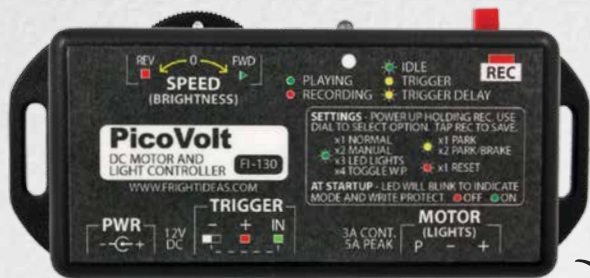


Gargoyle Body +\$10
+ \$250



WWW.FRIGHTIDEAS.COM

MOTOR AND LIGHTING CONTROLLERS



\$49⁹⁹

PicoVolt

MOTOR AND
LED CONTROLLER

FI-130

- Create life-like movement of motors or lighting effects
- Can stop motors at the park position

(power supply optional)

The PicoVolt allows you to precisely control the speed and direction of a DC motor, or brightness of LED lights. Keep the motor at a constant speed, or create your own animation and have it loop or played on a trigger.

Manual Control or Animation

In its simplest mode, the PicoVolt's speed wheel can be used to precisely set the speed and direction of a DC motor. You can also program up to 60 seconds of animation at any speed and in any direction.



Trigger Input

The new trigger input allows the PicoVolt to be used for more than just looping animation. Connect the input to any standard sensor and the PicoVolt will play your animation back on command.

Motor Parking

The PicoVolt can bring your motor back to the park position at the end of the animation. It can let it coast to a stop, or stop it instantly using the new brake option. This opens up new applications for the PicoVolt that were previously not possible due to motor drift.

LED Lighting Control

The PicoVolt also has an LED lighting mode that allows you to easily program any lighting effect. Loop the effect, or play it on a trigger.



\$89⁹⁹

PicoDMX
DMX PLAYER

FI-140

Ever need to incorporate a DMX fixture into a scene or scare but couldn't justify the complexity and cost of a full-featured DMX controller?

The PicoDMX allows you to control most DMX fixtures from a simple trigger or PicoBoo controller. Choose from a list of ready to use programs for popular fixtures, or use our free software to create your own.



\$199⁹⁹

PicoFX

LIGHTING CONTROLLER

FI-115

- MP3 audio, includes SD Card
- 2 lighting FX or On/Off outputs
- Includes programs or make your own
- Triggerable

(power cable and SD card included)

Need a Pepper's Ghost effect? A thunder and lightning controller? A power failure simulator? The PicoFX can do all that and more! The PicoFX can be easily programmed by you to mimic any lighting effect you want.

Lighting Outputs



The lighting outputs can each handle 500 watts. String together five 100 watt bulbs, or use one 500 watt halogen. A pair of halogen floods and a nice thunderstorm track are the perfect accessories for the PicoFX.

MP3 Audio from SD Card

Good sound quality is fine if you're playing a scream or a roar while firing off a pneumatic prop, but for a thunder storm you need *great* quality sound. Use any sound you like by copying it to the SD card and then programming the lights to follow in sync.



Real-Time Programming

This is the easy part - there's one red record button and two knobs. Press the record button and your sound starts playing, then use the knobs to dim your lights as you listen to the sound. The PicoFX is also compatible with our free Director software for more advanced programming.



PicoSTORM
STORM IN A BOX

FI-106

The PicoFX can also be purchased as a PicoStorm. It's the same product except the SD card is pre-programmed to start the thunder and lightning scene as soon as it's plugged in. If all you want is a storm in a box then get this, you can easily change it right back to a PicoFX if needed.

OR CALL 1-877-815-5744

8

MP3 PLAYERS



BooTunes

MP3 PLAYER

FI-408

- 8 trigger inputs
- DMX compatible
- Multiple operating modes

(includes power supply, SD card optional)

NEW!

**Random
Playback
Option**



BooTunes **AMPED!**

MP3 PLAYER & 50W AMP

FI-418

- Internal 50 watt Class-D Amplifier
- Mixer Input for Amplifier
- 4 trigger inputs
- DMX compatible

(power supply and SD card optional)

The BooTunes and BooTunes Amped are designed specifically with haunters in mind. Use them to run the audio for a single area, hay ride, or your entire haunt. They can be setup to loop through any number of audio files at power-up, fade out and play announcements at set intervals, loop an emergency message if power fails, and more. *Try doing that with an iPod or CD player!*

Audio



Fill your SD card with as many sounds as you want and the BooTunes will start pumping them out. If you want the sounds to play in a certain sequence then just name the files appropriately. No need to copy them to the card in a certain order.

Need great audio quality? The BooTunes can play any MP3 file up to 256kbps. The audio output is a standard line-level output using a 3.5mm stereo audio jack. The Amped version also includes speaker terminals for the 50 watt amplifier.

DMX Compatible

BooTunes and BooBoxes can be easily chained together using DMX to have them trigger the same scenes simultaneously. Using the DMX connection means you don't have to waste the BooBox's outputs to trigger additional audio channels.

A BooTunes can even be set to act as a DMX master, triggering other BooTunes units at the same time it's triggered.

Trigger Inputs

Each of the optically-isolated inputs can be set to play a sound, stop a sound, adjust the volume, or trigger an option. If triggered during playback, sounds can be set to interrupt the current sound or to ignore the trigger completely. Trigger pre and post delays are also available to optimize timing.



Options Galore

Set some inputs to fade when interrupted, pause playback, or duck the volume so you can make an announcement. There's a bunch of options available so you can customize the BooTunes behavior to your needs. And there's no dip switches to fiddle with, all settings and options are easily changed by just creating folders with special names.

Ambient Resume - This option tells the BooTunes to resume the ambient sound at the point it was interrupted, rather than starting a new sound from the beginning.

Random - Pick a random track.

Pre and Post Delays - Custom your trigger timing.

Fade on Interrupt - Cause the currently playing sound to fade out rather than end abruptly, if interrupted.

Next and Previous Track - Turns the input into a next or previous track control.

Interruptible Inputs - Sets the input to allow interrupts from other inputs.

Timer - Play a sound automatically at timed intervals.

Slave Mode - This option will set the BooTunes to act as a DMX slave to another BooTunes or BooBox.

Mixer Input

The mixer input on the BooTunes Amped allows you to take advantage of the internal amplifier for other line-level audio, like a line-level microphone for example.

STARTER KITS AND ACCESSORIES

STARTER KITS

PicoBoo Starter Kits

The kit includes a PicoBoo with power supply, our most popular PIR sensor, an audio recording cable, and a standard non-powered speaker.



Flex Starter Kit

The kit includes an 8 output BooBox Flex, PIR motion sensor, 12 volt 1 amp power supply, single relay board, and either a Director Connect or ScareMaster.



FlexMax DMX Starter Kit

The kit includes a 16 output BooBox FlexMax, PIR motion sensor, 24 volt 5 amp power supply, quad relay board, BooBox DMX Cable, and either a Director Connect or ScareMaster.



ACCESSORIES



\$29.99
FI-600



\$34.99
FI-600B

PIR Motion Sensors

Our most popular sensor. Great range, reliable, and immune to fog from smoke machines. Includes 15 feet of cable.



\$15.99
FI-220



\$29.99
FI-611

Horn Speaker

Small and Loud! Great companion for the new PicoBoos. 15 Watts.

30 Watt Version

FI-221

\$22.99

Foot Switch

Use this when it would be easier to trigger a controller by foot. Includes 15 feet of cable.



\$49.99
FI-615

Reflective Beam Sensor

Our most precise sensor. Triggers a controller the instant someone breaks the invisible beam.



\$69.99
FI-616

Diffuse Beam Sensor

Similar to the Reflective Beam Sensor except this one doesn't need a reflector. Range is about 3 feet.



Power Supplies

12v 1A	FI-712-1	\$12.99
12v 5A	FI-712-7	\$19.99
24v 1A	FI-712-5	\$19.99
24v 5A	FI-712-10	\$49.99



\$21.99
FI-610

Hand Trigger

Perfect for situations that require an actor to trigger the controller. Includes 15 feet of cable.



\$139.99
FI-620B

Wireless Triggers

Trigger as many as 4 props from up to 500 feet away.

Audio Cables

3.5mm 6 Foot Male-Male	FI-710-1	\$3.99
3.5mm 12 Foot Extension	FI-710-3	\$8.99

SD Cards

2GB	FI-725-2	\$9.99
4GB	FI-725-4	\$16.99

SD Card Reader











USB	FI-721	\$19.99
-----	--------	---------

Mini Non-Powered Speaker

2.8" Driver	FI-224	\$9.99
-------------	--------	--------

OR CALL 1-877-815-5744

COMPARISON CHART

										
	PicoBoo ONE	PicoBoo JR	PicoBoo	PicoBoo AC	PicoBoo Plus	PicoBoo MAX	PicoFX	BooBox Flex	BooBox FlexMax	PicoVult
Inputs	1	1	1	1	1	1	1	2	8	1
Outputs	1	2	2	2	4	4	2	2, 4, or 8 •	4, 8, 16 • +	1
Output Type	Solid-State	10A Relay	10A Relay	AC On-Off	10A Relay	10A Relay	AC Dim/On-Off	Solid-State	Solid-State	Motor/LED
Ambient			Sound	Sound	Sound/Animation	Sound/Animation	Sound/Animation	Sound/Animation	Sound/Animation	Animation
Sound			2 min.	2 min.	2 min.	MP3	MP3	MP3	MP3	
Animation	1 min.	2 min.	2 min.	2 min.	2 min.	36 min.	36 min.	Hours	Hours	1 min
Amp			30W Class D	10W Class D	30W Class D	30W Class D			50W Class D	
DMX								In/Out	In/Out	
Director						Yes	Yes	Yes	Yes	
ScareMaster								Yes	Yes	
Price	\$49. ⁹⁹	\$69. ⁹⁹	\$89. ⁹⁹	\$109. ⁹⁹	\$139. ⁹⁹	\$199. ⁹⁹	\$199. ⁹⁹	from \$159. ⁹⁹	from \$269. ⁹⁹	\$49. ⁹⁹
Model	FI-102	FI-103	FI-104	FI-105	FI-124	FI-134	FI-115	FI-206	FI-216	FI-130

• Expansion port allows use of Relay or AC Outlets
 + DMX Output allows addition of many more outputs



WEB: WWW.FRIGHIDEAS.COM

EMAIL: INFO@FRIGHIDEAS.COM

TEL: **1-877-815-5744**
1-905-803-9274