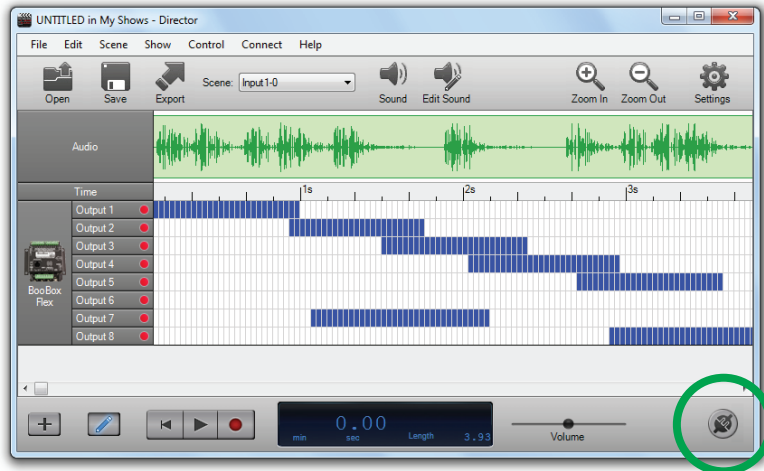


4

Launch Director and click Connect

Director can be downloaded for free at www.frightideas.com/director



After clicking Connect, the button should glow green indicating "real-time" mode has been enabled.



**Thank's for Purchasing
a Director Connect!**

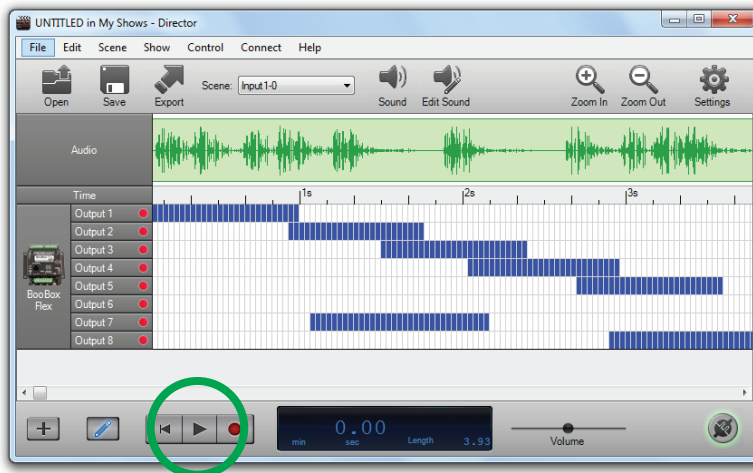
Follow the steps inside to get started

www.frightideas.com

5

Press Play

Your scene will start playing on the BooBox.



1

Connect the USB Cable

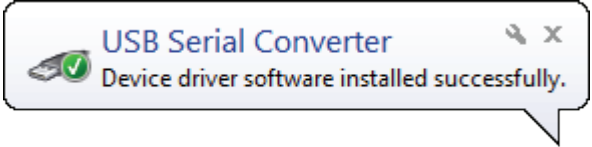
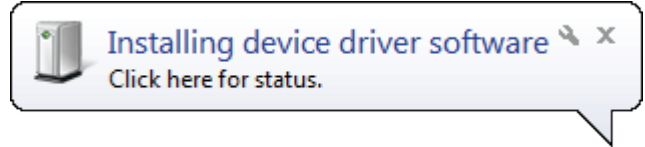


2a

Driver Install - Windows 7

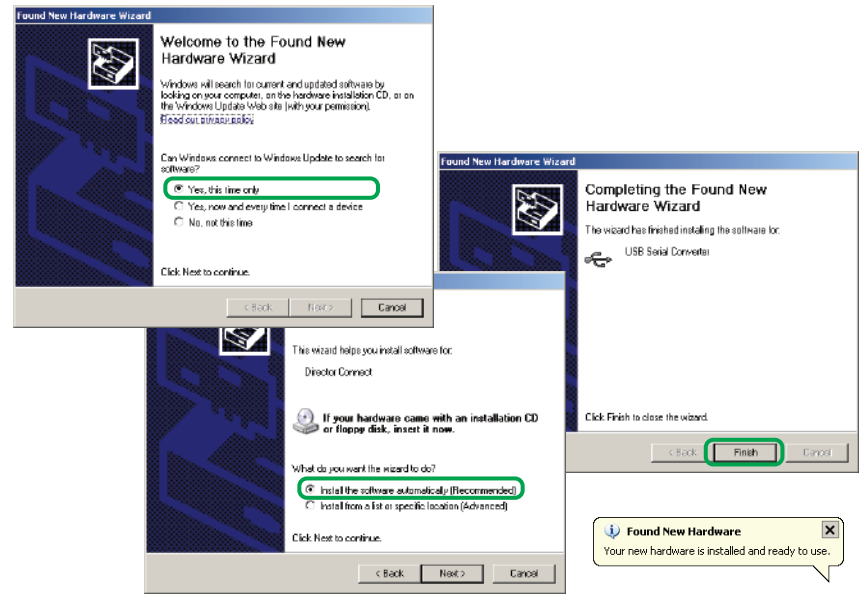
Continue to 2b or 2c for Windows Vista or XP.

Windows 7 should automatically connect to Windows Update and download the driver. If it doesn't, select the option to search Windows Update for the driver.



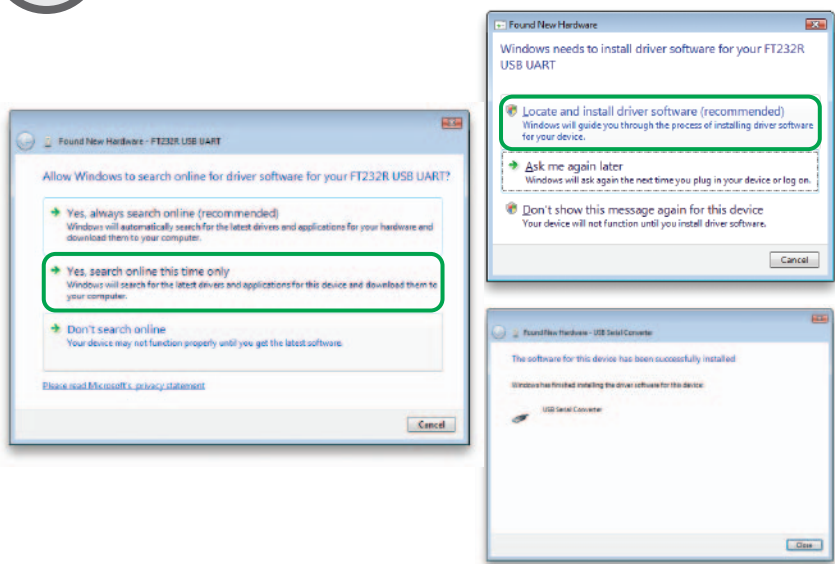
2c

Driver Install - Windows XP



2b

Driver Install - Windows Vista



3

Connect To BooBox



(The BooBox must also be connected to its power supply)