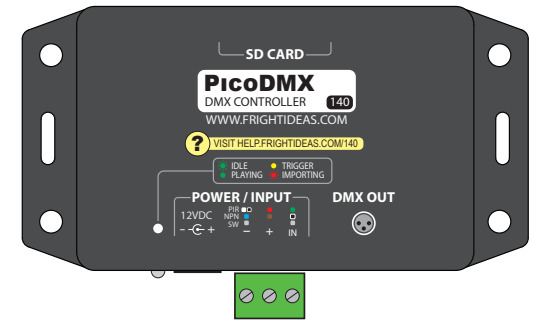


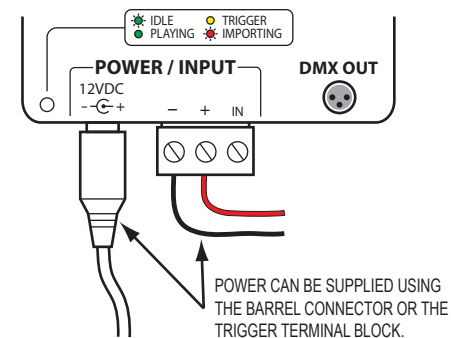


Quick-Start Guide

PicoDMX



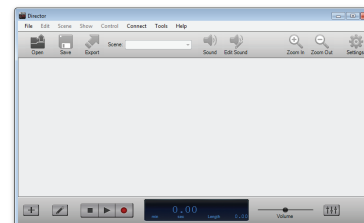
Power Supply



The PicoDMX requires a 12 volt DC power supply. In almost all cases you will just connect the included power supply. However, if the PicoDMX is part of a larger 12 volt system with other controllers it might be neater or easier to borrow the 12 volts from a shared supply. If that's the case, connect it to the trigger terminal block as shown.

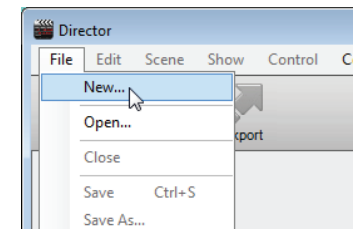
Creating Your DMX Animation

1 Download and launch Director

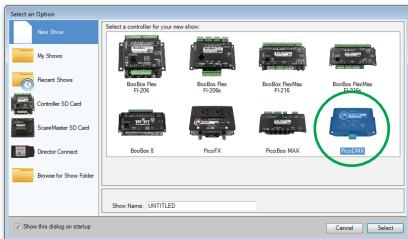


Director can be downloaded for free at www.frightideas.com/director

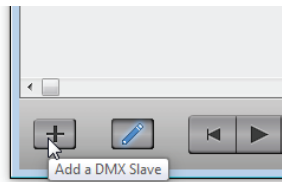
2 Create a new show



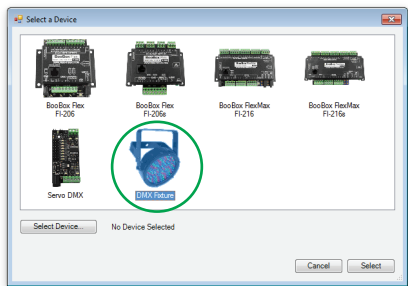
3 Select the PicoDMX and press Select



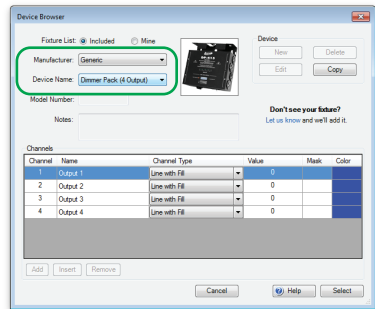
4 Click the + button



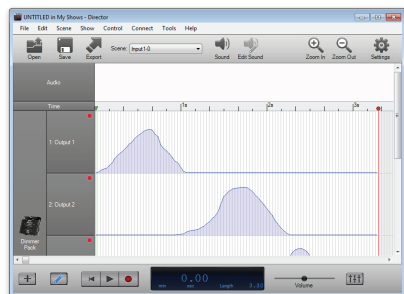
5 Select DMX Fixture and press Select



6 Select or create your fixture then press Select twice.

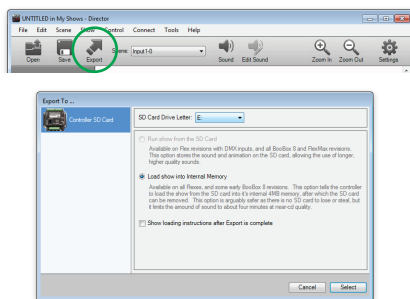


7 Create your animation

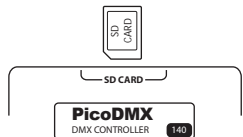


You can add additional fixtures, up to a maximum of 10 DMX channels.

8 Export to an SD card



9 Insert the SD card into the PicoDMX.



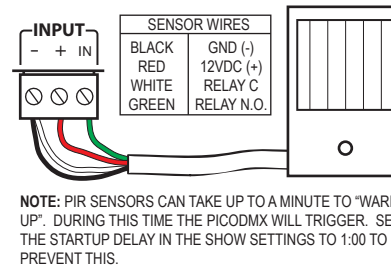
When the red LED stops blinking you can remove the SD card. It may first have to update it's firmware which is a green blink for about 40 seconds.

10 Set your Fixture Address

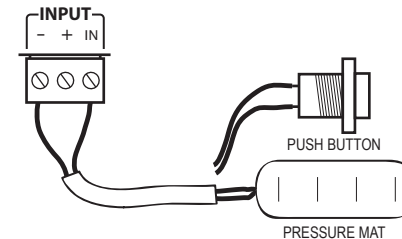


Set your DMX Fixture to address 2. Use the trigger diagrams on the next page to connect a trigger and test your program.

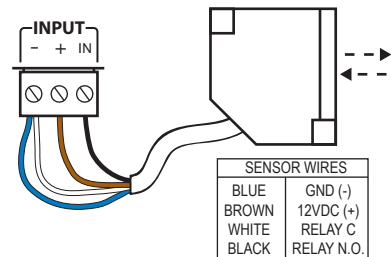
Trigger Input Wiring



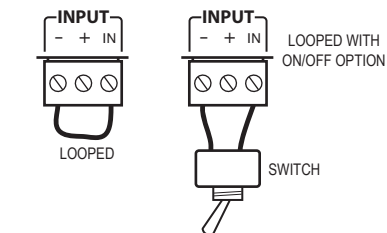
PIR MOTION SENSOR



PRESSURE MAT OR PUSHBUTTON



BEAM SENSOR



CONTINUOUS PLAY (LOOPED)

