



ServoDMX

FIRMWARE UPDATE INSTRUCTIONS



www.frightideas.com

Checking your Current Firmware Version

To know if a firmware update is required you need to know the current version running in your unit. You can determine that by watching the LEDs when the ServoDMX powers up. The Status LED will turn yellow and you'll see two numbers flash on the Servo LEDs. It will show two patterns. If it turns on the 1 LED, followed by the 2 & 3 LEDs, that would be version 1.23. If it flashes the 2 LED followed by the 1 and 5 LEDs, that would be version 2.15.

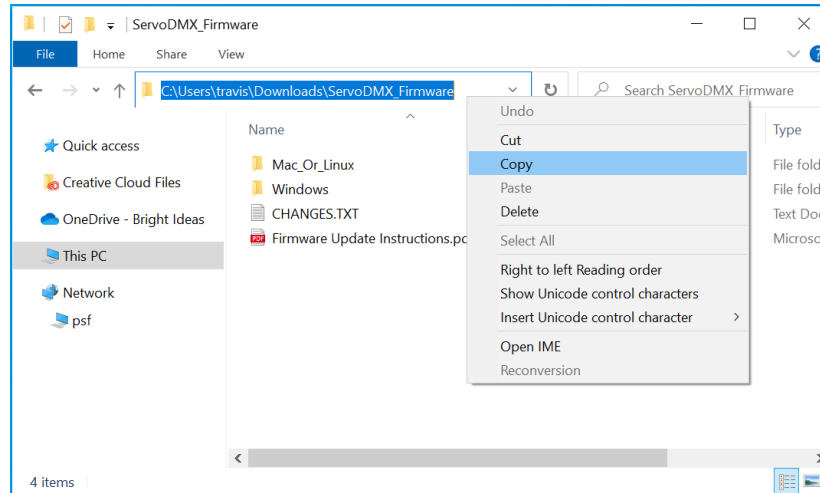
Supported DMX Interfaces

This updater should support most DMX interfaces that show up as a simple COM port. It also supports the Enttec Pro interfaces.

Updating the Firmware in Windows

1. Open the folder named Windows folder inside the folder you opened this document from. **Make sure** you have Extracted the files from the zip file by right-clicking on it first.

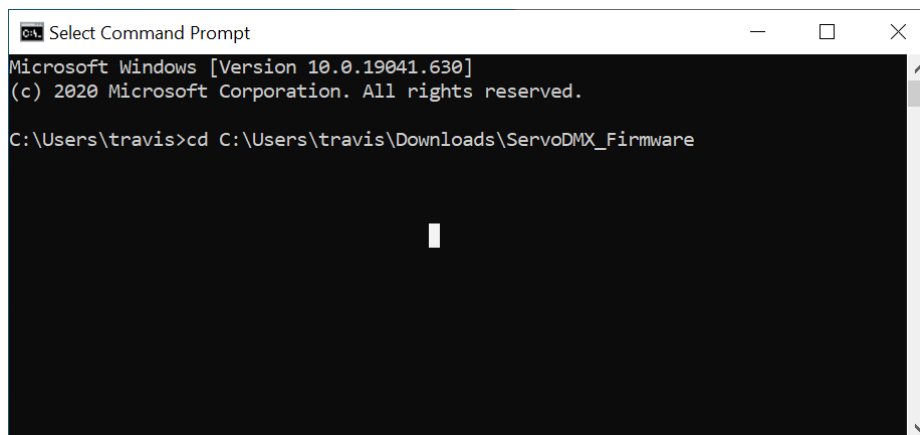
2. Go to the folder path towards the top of the window, select it all, right-click and select Copy.



3. Open the Start menu, type in Command to find Command Prompt. Then open the Command Prompt.

4. Inside the Command Prompt, type “cd ” (without the quotes, make sure there is a space after), then Paste in the path you copied above by right-clicking anywhere in the command prompt window.

It should like like this ...

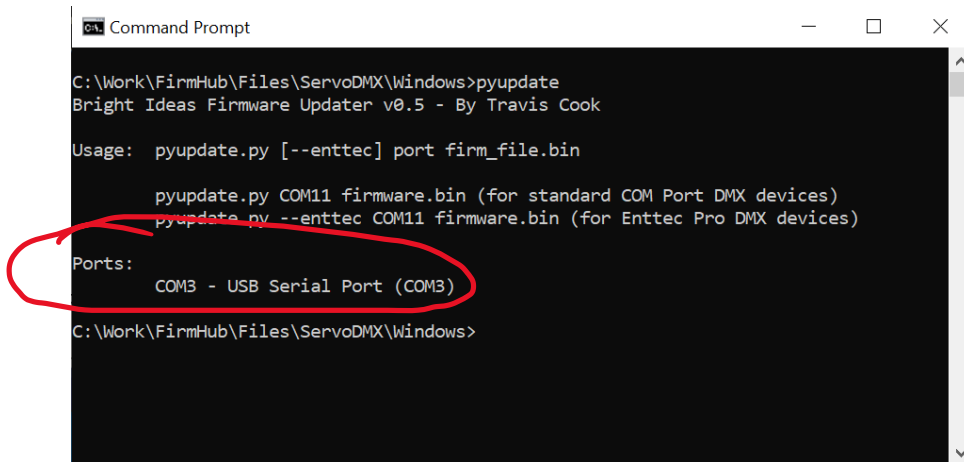


Hit Enter. You should now be inside that folder. The C:\ prompt should show the full path you pasted in followed by >

5. You now have to determine which COM port your interface is using. You can list the COM ports by running the pyupdate command without any other arguments...

```
> pyupdate
```

Note the COM3 port listed below “Ports:”. That is the only available port and the only device plugged in is the DMX interface, so that must be the port. If you see multiple ports listed, unplug the other devices and run pyupdate again. If that doesn’t work, you can check the Windows Device Manager to see if that can tell you which port is assigned to the interface.



```
Command Prompt
C:\Work\FirmHub\Files\ServoDMX\Windows>pyupdate
Bright Ideas Firmware Updater v0.5 - By Travis Cook

Usage: pyupdate.py [--enttec] port firm_file.bin

        pyupdate.py COM11 firmware.bin (for standard COM Port DMX devices)
        pyupdate.py --enttec COM11 firmware.bin (for Enttec Pro DMX devices)

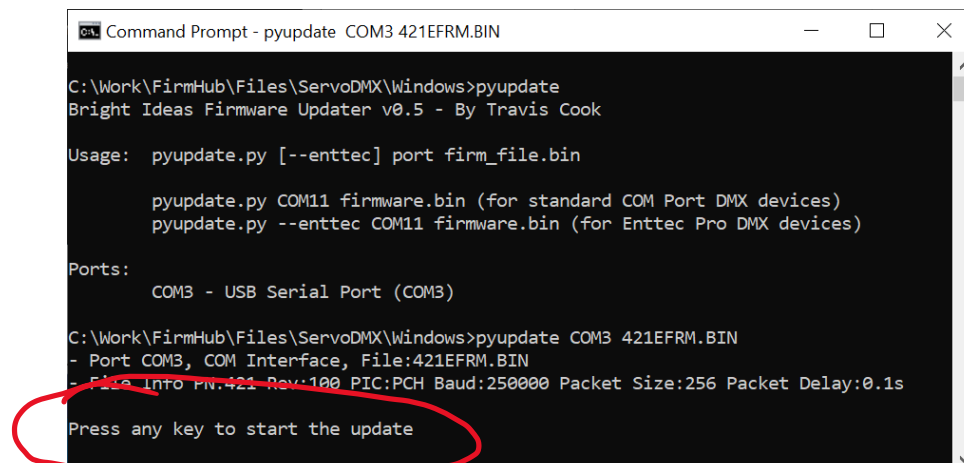
Ports:
    COM3 - USB Serial Port (COM3)

C:\Work\FirmHub\Files\ServoDMX\Windows>
```

6. Make sure your ServoDMX is powered OFF and connected to your DMX interface. For a simple serial DMX interface you can start the update process by specifying only the COM port (first line below). If you are using an Enttec Pro interface you also need to specify that as shown in the second line. In either case, replace COM3 with the COM port in your setup.

```
> pyupdate COM3 421EFRM.BIN
> pyupdate --enttec COM3 421EFRM.BIN
```

Once that command is run you should see a message to “Press any key to start the update”. **Do NOT** do that yet.



```
Command Prompt - pyupdate COM3 421EFRM.BIN
C:\Work\FirmHub\Files\ServoDMX\Windows>pyupdate
Bright Ideas Firmware Updater v0.5 - By Travis Cook

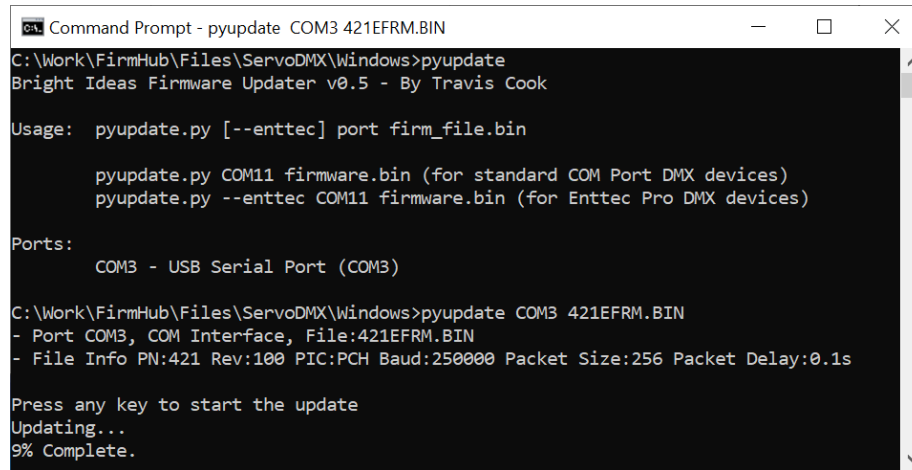
Usage: pyupdate.py [--enttec] port firm_file.bin

        pyupdate.py COM11 firmware.bin (for standard COM Port DMX devices)
        pyupdate.py --enttec COM11 firmware.bin (for Enttec Pro DMX devices)

Ports:
    COM3 - USB Serial Port (COM3)

C:\Work\FirmHub\Files\ServoDMX\Windows>pyupdate COM3 421EFRM.BIN
- Port COM3, COM Interface, File:421EFRM.BIN
- File Info: FW:421 Rev:100 PIC:PCH Baud:250000 Packet Size:256 Packet Delay:0.1s
Press any key to start the update
```

7. Power up the ServoDMX. The STATUS light should start flashing green twice. Now you can press any key to start the update. You'll see the update status as the file is uploaded. The ServoDMX's STATUS light will be blinking green as the file is uploading. When the update is complete, it will blink green 3 times.



```
Command Prompt - pyupdate COM3 421EFRM.BIN
C:\Work\FirmHub\Files\ServoDMX\windows>pyupdate
Bright Ideas Firmware Updater v0.5 - By Travis Cook

Usage:  pyupdate.py [--enttec] port firm_file.bin

        pyupdate.py COM11 firmware.bin (for standard COM Port DMX devices)
        pyupdate.py --enttec COM11 firmware.bin (for Enttec Pro DMX devices)

Ports:
        COM3 - USB Serial Port (COM3)

C:\Work\FirmHub\Files\ServoDMX\windows>pyupdate COM3 421EFRM.BIN
- Port COM3, COM Interface, File:421EFRM.BIN
- File Info PN:421 Rev:100 PIC:PCH Baud:250000 Packet Size:256 Packet Delay:0.1s

Press any key to start the update
Updating...
9% Complete.
```